



# Sedgwick Redbarn Farms Subdivision Lots For Sale

For more info click on: [www.sedgwickredbarnfarms.com](http://www.sedgwickredbarnfarms.com)

**Custom Modern Farmhouse Model Home**  
**under construction on Lot 2, 603 Shocker Lane**  
by Margreiter Construction [www.margreiterconstruction.com](http://www.margreiterconstruction.com)

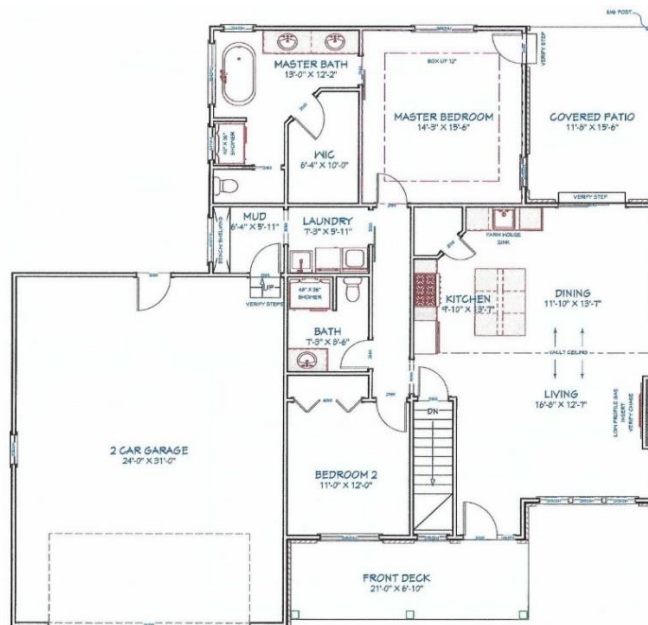


## **Plan Highlights- Modern Farmhouse style total living area 2,934 sq.ft. Price TBD**

Lot 2- 12,927 sq ft.

Main Floor 1467 Sq. Ft. - 2 Bedrooms, 2 baths, large front porch, back covered patio, oversized 2 car garage, vaulted ceiling living area, gas fireplace, and much more custom features.

Full Basement 1467 Sq. ft. - Option to finish with 2 additional bedrooms, 1 bath, Utility room, and Recreation Room.



FIRST FLOOR PLAN

SCALE: 1/4"=1'  
4" CEILING  
1467 SQ. FT.

# Redbarn Farms Custom Modern Farmhouse Model Home

## Main Floor Features - 1467 Sq ft.

Farm style large front porch with railing, columns, metal porch shed roof, porch swing, stacked stone wainscoting throughout front and back patio

Large oversized 2 car garage with metal shed brow, entry to mud room, laundry room with barn door

Vaulted living area with wood floors, gas fireplace, dream gourmet kitchen with farm sink, quartz counters, large island, walk-in pantry, upgraded cabinets and appliances

Dining room opens to covered patio with stacked stone wainscoting

Large Master Bedroom with tray ceiling, door to patio, and barn door to Master on-suite

Master on-suite, with vintage tub, large shower, pocket door to toilet closet, two vanity sinks, and large walk-in closet

Second bedroom or office and full bath

## Full Basement Features - 1467 Sq ft. option to custom finish

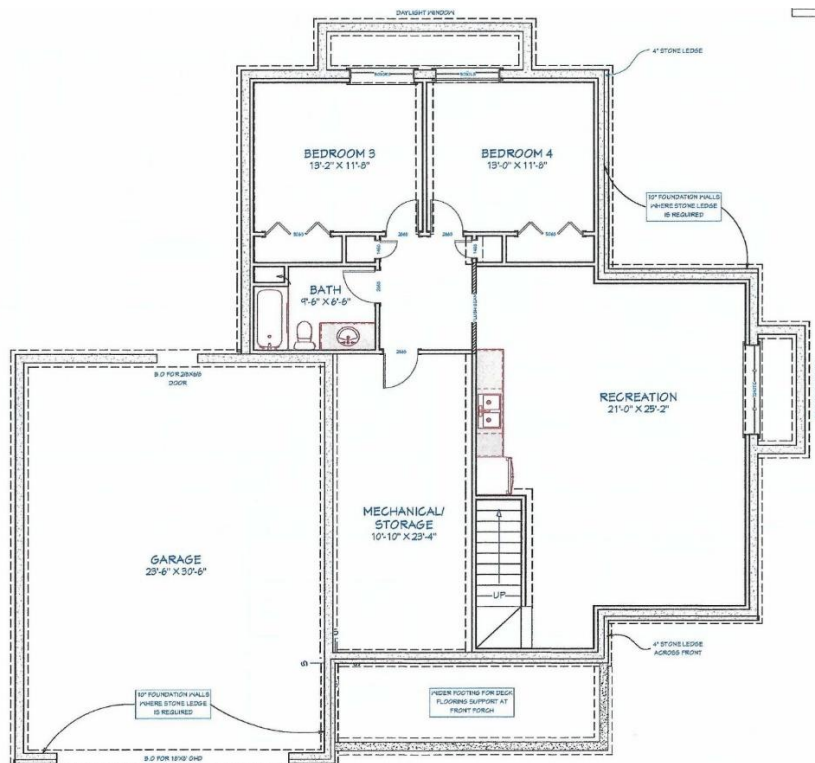
Daylight windows

2 Large bedrooms

Full Bathroom

Large Recreation room with wet bar for entertaining

Large Mechanical/Storage room with a 90% efficient gas furnace, gas water heater, Air Conditioner, and Water Softener



**FOUNDATION PLAN**

SCALE: 1/4"=1'