



## Sedgwick Redbarn Farms Subdivision Lots For Sale

For more info click on: [www.sedgwickredbarnfarms.com](http://www.sedgwickredbarnfarms.com)

### Custom Modern Farmhouse Model Home

Lot 2, 603 Shocker Lane

by Margreiter Construction [www.margreiterconstruction.com](http://www.margreiterconstruction.com)

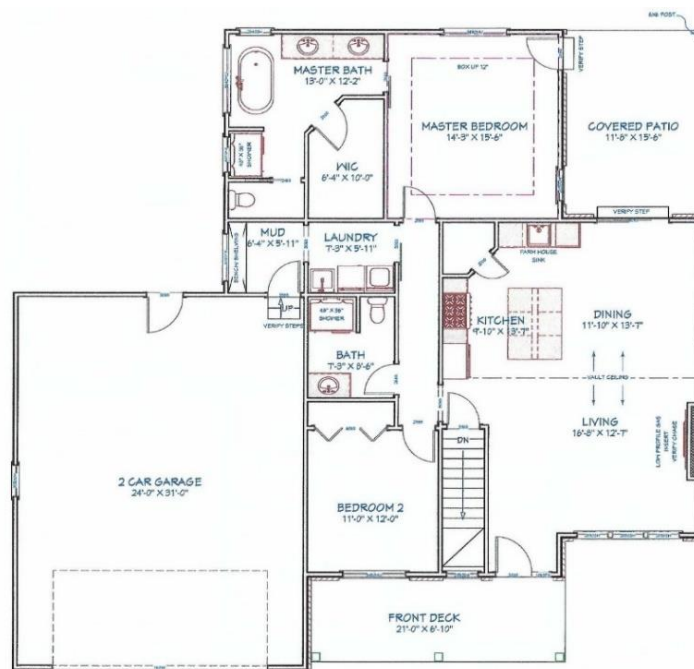


**Plan Highlights- Modern Farmhouse total living area 2,934 sq. ft. Base price starting @ \$364,000 including Lot 2 plus upgrades @ \$85,000 for a total list price \$449,000**

Lot 2 (largest lot) - 12,927 sq ft. with irrigation well and sprinkler system, lawn and landscaping

Main Floor 1467 Sq. Ft. - 2 Bedrooms, 2 baths, large front porch, back covered patio, oversized 2 car garage, vaulted beam ceiling, gas fireplace, windows, with many custom features/upgrades.

Full Basement 1467 Sq. ft. – Rooms framed to finish with 2 additional bedrooms, 1 bath, Utility room, Recreation Room, and wet bar.



**FIRST FLOOR PLAN**

SCALE: 1/4"=1'  
9' CEILING  
1467 SQ. FT.

# Redbarn Farms Custom Modern Farmhouse Model Home

## Main Floor Features & Upgrades - 1467 Sq ft.

Farm style large front porch with tongue & groove pine ceiling, railing, columns, metal porch shed roof, porch swing, whitetail stone wainscoting throughout front and back patio, irrigation well with sprinkler system and fescue lawn. Beautiful countryside, farmland, and sunset views.

Large oversized 2 car garage with metal shed brow, entry landing to mud room, laundry room with sink and white brick tile with barn door opens to hallway

Vaulted ceiling with beam living area with hickory wood floors, deluxe gas fireplace whitetail stone to ceiling and live edge wood mantel, and windows galore. Dream gourmet kitchen with farm sink, quartz counters, huge island, walk-in pantry, upgraded cabinets and high-end KitchenAid appliances including gas range and side-by-side refrigerator

Dining room opens to covered patio with whitetail stone wainscoting, tongue & groove pine ceiling gas BBQ hookup

Large Master Bedroom with tray tongue & groove pine ceiling and shiplap accent wall, carpeting

Master on-suite, with vintage free standing tub with surround maple shelf, large tile shower with frameless glass door, pocket door to toilet closet, two vanity sinks with champagne bronze fixtures, and large walk-in closet

Second bedroom or office and full hall bath with tile shower with glass door

## Full Basement Features - 1467 Sq ft. option to custom finish

Large Daylight windows, 2 large bedrooms, full bathroom, large recreation room with wet bar

Large Mechanical/Storage room with a 96% efficient gas furnace with humidifier, 50 gal gas water heater, SEER 14 Air Conditioner, and plumbed for Water Softener

