



Sedgwick Redbarn Farms Subdivision Lots For Sale

For more info click on: www.sedgwickredbarnfarms.com

Custom Modern Farmhouse Model Home
under construction on Lot 2, 603 Shocker Lane
by Margreiter Construction www.margreiterconstruction.com Coming Soon!

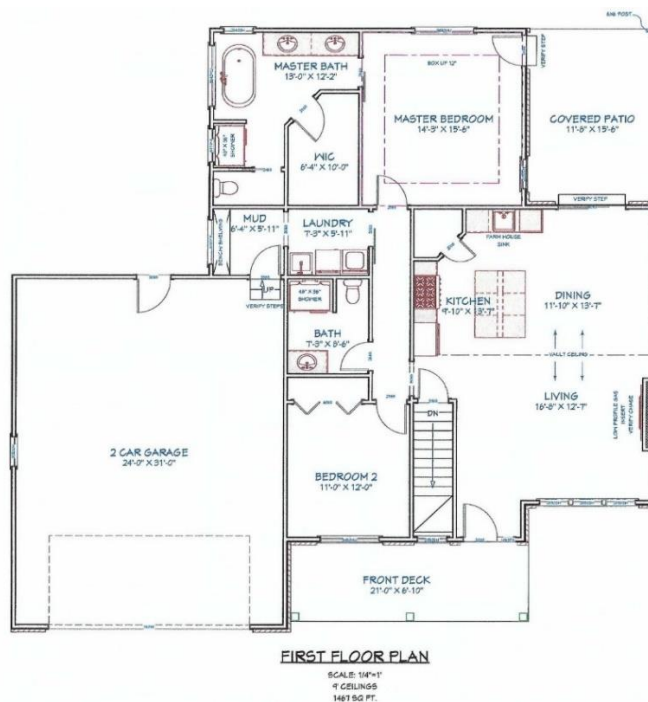


Plan Highlights- Modern Farmhouse style total living area 2,934 sq.ft. Price TBD

Lot 2- 12,927 sq ft.

Main Floor 1467 Sq. Ft. - 2 Bedrooms, 2 baths, large front porch, back covered patio, oversized 2 car garage, vaulted beam ceiling, gas fireplace, windows galore, with many custom features.

Full Basement 1467 Sq. ft. - Option to finish with 2 additional bedrooms, 1 bath, Utility room, Recreation Room, and wet bar.



Redbarn Farms Custom Modern Farmhouse Model Home

Main Floor Features - 1467 Sq ft.

Farm style large front porch with tongue & groove ceiling, railing, columns, metal porch shed roof, porch swing, whitetail stone wainscoting throughout front and back patio, irrigation well with sprinkler system

Large oversized 2 car garage with metal shed brow, entry to mud room, laundry room with barn door

Vaulted ceiling with beam living area with white oak wood floors, gas whitetail stone fireplace, dream gourmet kitchen with farm sink, quartz counters, large island, walk-in pantry, upgraded cabinets and high-end KitchenAid appliances including gas range

Dining room opens to covered patio with whitetail stone wainscoting, gas BBQ hookup

Large Master Bedroom with tray tongue & groove ceiling and shiplap accent wall

Master on-suite, with vintage free standing tub, large tile shower, pocket door to toilet closet, two vanity sinks, and large walk-in closet

Second bedroom or office and full hall bath with tile shower

Full Basement Features - 1467 Sq ft. option to custom finish

Daylight windows

2 Large bedrooms

Full Bathroom

Large Recreation room with wet bar for entertaining

Large Mechanical/Storage room with a 96% efficient gas furnace, gas water heater, SEER 14 Air Conditioner, and Water Softener

